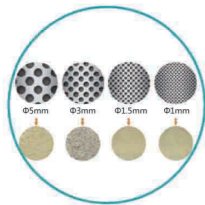


# SFSP66 Series Fine Grinding Hammer Mill

(Production license: xk06-013-00578)



SFSP66 series hammer mill is used for fine grinding mill in petfood and fish feed production, compound feed and other flour milling Industry.

Model	Capacity(t/h)	Power(kw)
SFSP66 45	1.4~3.5	37~45
SFSP66 60	1.5~6.0	55~75
SFSP66 80	4.5~9.0	90~110
SFSP66 100	6.6~13.0	132~160
SFSP66 120	9.8~19.5	160~200



• When the density of the material is 0.2 to 0.8 kg/ dm<sup>3</sup>, and humidity is 15% or less:

- For fine grinding, it adopts fine screen , material particle size is 10 mm or less, after grinding mesh size range is of 0.3 to 1.5 mm.
- For coarse grinding, it adopts the round hole screen , material particle size is 60 mm or less, after grinding mesh size range is of 1.5 to 8.0 mm.



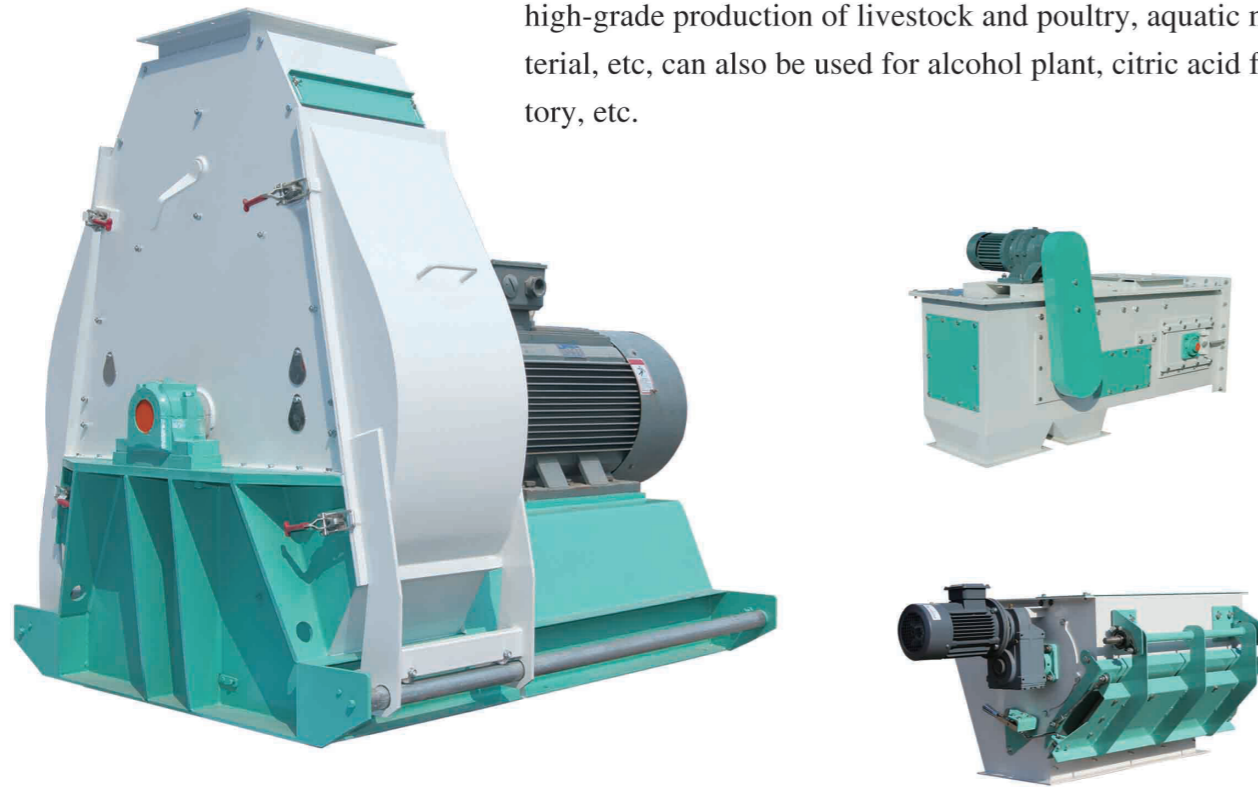
## Features

- With Hammer rod locking device, convenient and quick replacing hammer;
- Tear-Circle grinding chamber, effectively eliminates circumfluence during grinding, high throughput.
- U-shaped second grinding mechanism on the bottom of the grinding chamber, increases product beating frequency, more uniform particle size.
- The gap between hammer and screen can be adjusted through changing the position of hammer bar, realize normal and fine grinding.
- Rotor passes accurate balance test, smooth rotating, and low noise.
- Hammer slice blade using hard alloy vacuum sintering, long service life.
- Key parts is imported products, long life, low maintenance cost;
- Hammer spacer and hammer configuration is consistent;
- Feeder is mounted on top of the hammer mill to obtain a uniform feed rate, It is also functions as heavy particle and iron separator.
- Remote control of the direction of products feeding direction and rotor rotation.
- SKF bearing, smooth operation, low temperature rise.



## SFSP998 Series Hammer Mill

998 Series hammer mill can be applied to feed mills in high-grade production of livestock and poultry, aquatic material, etc, can also be used for alcohol plant, citric acid factory, etc.



### Features

- Inner rotor can prevent material came out from the side , guarantee fineness and more uniform;
- The bottom is of the gravity flow discharge, reduce energy consumption by 15%;
- Adjustable secondary wind inlet device, increase the rate of material sieving, prevent excessive crushing materials;
- Tear-Circle grinding chamber,effectively eliminates circumfluence during grinding,high throughput.
- U-shaped second grinding mechanism on the bottom of the grinding chamber, increases product beating frequency, more uniform particle size.
- The gap between hammer and screen can be adjusted through changing the position of hammer bar,realize normal and fine grinding.
- Rotor passes accurate balance test, smooth rotating, and low noise.
- Key parts is imported products, long life service, low maintenance cost;

Model	Capacity(t/h)	Power(kw)
SFSP120×300	10~15	55/75
SFSP120×400	12~20	90/110
SFSP120×500	15~25	110/132
SFSP120×600	25~35	132/160
SFSP120×800	38~50	200/220/250

## SWFL Series Vertical Pulverizer



Model	Capacity(t/h)	Power(kw)
SWFL82	1.5~3.0	75/90
SWFL110	1.8~3.5	90/110
SWFL130	3.0~5.0	132/160

SWFL series vertical Pulverizer is a new kind of super-fine grinding processing equipment, suitable all kinds of coarse crushing materials such as corn, sorghum, wheat and barley, soybean meal, small fish and shrimp

### Features

- Compact structure, less area taken.
- Structure without sieve,no blocking. Pulverizing,air grading and repulverizing can be performed at the same time.
- Unique crushing plate structure, high output; Thickening of the wearing plate, the overall quenching treatment, long service life; Optimization design of grading system, high grading efficiency, uniform mesh size.
- Main shaft using air-cooling to prevent high temperature during high speed.
- Unique assembling of hammer,easy to change.
- New design hammer, save cost for customer
- Adjustable mesh from 60-200 can meet special grinding requirement temperature rising is low in transportation.
- Equipped imported SKF Bearing.
- Feeder and grading are Frequency control.
- Unique anti block device prevent the material for smooth feeding.
- Side door, is for convenient maintenance and easy spare parts change.

# SSHJ Series Double-shaft High Efficiency Mixer



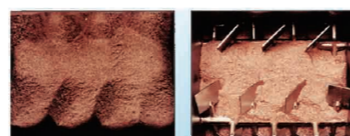
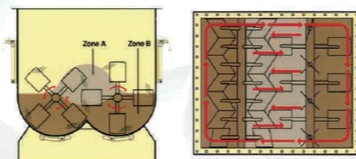
National testing certificate

## Good Stability

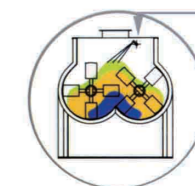
- Long-term stable operation, less failure;
- Mixing uniformity still perfect when increasing mixing time the growth of the use of time;
- Mixing uniformity will not change when change different material.

## Remark

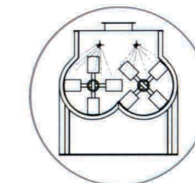
Mixer in feed production plays an important role in batching system left the mixe. The quality of the mixer so directly related to the survival and development of feed industry. Stable performance of the device not only can long continue to create benefits for enterprises, but also save substantial maintenance and repair costs.



Model	Effective Volume(m³)	Mixing Capacity Per Batch(kg)	Mixing Time Per Batch(s)	Power (kw)
SSHJ0.2	0.2	100		2.2
SSHJ0.5	0.5	250	30-120	7.5
SSHJ1	1	500	Time can be	15
SSHJ2	2	1000	properly extended	18.5
SSHJ3	3	1500	according to	22
SSHJ4	4	2000	different materials	30
SSHJ6	6	3000		37
SSHJ8	8	4000		45



Liquid Adding



Injection Cleaning System

It is widely used to mix the materials in the shape of powder, granule, flake, piece, and sticky materials in the industries of feed, grain, food, chemicals, medicine, pesticide, etc. It also can dry and cool various materials.

## Features

- Suitable for the production of poultry & livestock feed and normal aqua feed. It can also be used for premix production(Stainless steel)
- Fast speed mixing,high uniformity:CV ≤ 5% ;
- Driven by means of direct-coupled gear motor,smooth running,low noise,long life service.
- Enlarged design of mixing chamber,good mixing effect.
- Double entire length opened doors,big opening angle,low residue.
- Special shaft and door seal structure,no leakage.
- Can be equipped with air purging device,decrease residue.
- The gap between the mixing chamber and paddle can be adjusted.
- The advanced liquid adding and spraying system can add many liquids,solids with great accuracy.
- The unique air return system ensures smooth air flow during the feeding process.

## SSHJ Series Single Shaft Paddle Mixer



SDHJ single shaft paddle mixer is a high-performance batch mixer, can be able to mix free flow of dry solid materials. It is mainly used in feed, flour and other grain processing industry. Due to the features of raw material and adding the liquid, this high speed mixer can add liquid ratio is 5%, also it can provide the capacity range of 1000 to 8000 liters of various types.

Model	Effective Volume(m³)	Mixing Capacity Per Batch(kg)	Mixing Time Per Batch(s)	Power (kw)
SDHJ0.2	0.2	100		2.2
SDHJ0.5	0.5	250	30-120	7.5
SDHJ1	1	500	Time can be	15
SDHJ2	2	1000	properly extended	18.5
SDHJ4	4	2000	according to	30
SDHJ7	7	3000	different materials	37
SDHJ8	8	4000		45

### The best mixing precision high quality

•SDHJ single shaft paddle mixer ensure product to achieve the most strict quality standards. It can keep the product quality excellent mixing uniformity, (CV) less than 5%.



### Efficient Mixing, save time

- With best geometric design mixing chamber and high-speed mixer blades ensure superior Performance: mixing time is around 1.5 minutes
- Dual discharge door make discharge time of less than 10 seconds
- Up to 20 batches / hour production means double times efficiency than normal mixer.

### Excellent design, Good sanitation

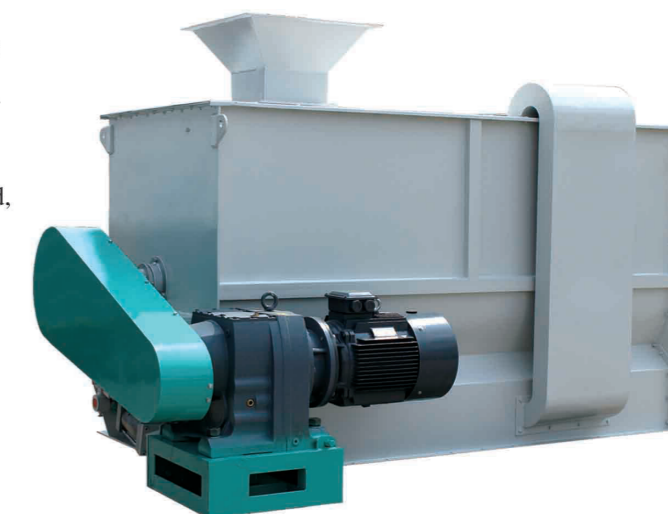
- Reasonable design of chamber surface area can benefit for the whole plant, can prevent the material residual and avoid pollution .
- It can be convenient to clean the mixing chamber and blade

### Solid structure, Easy maintenance

- The main shaftsealing performance is more strong to ensure easily maintenance, and help customer save maintenance cost.

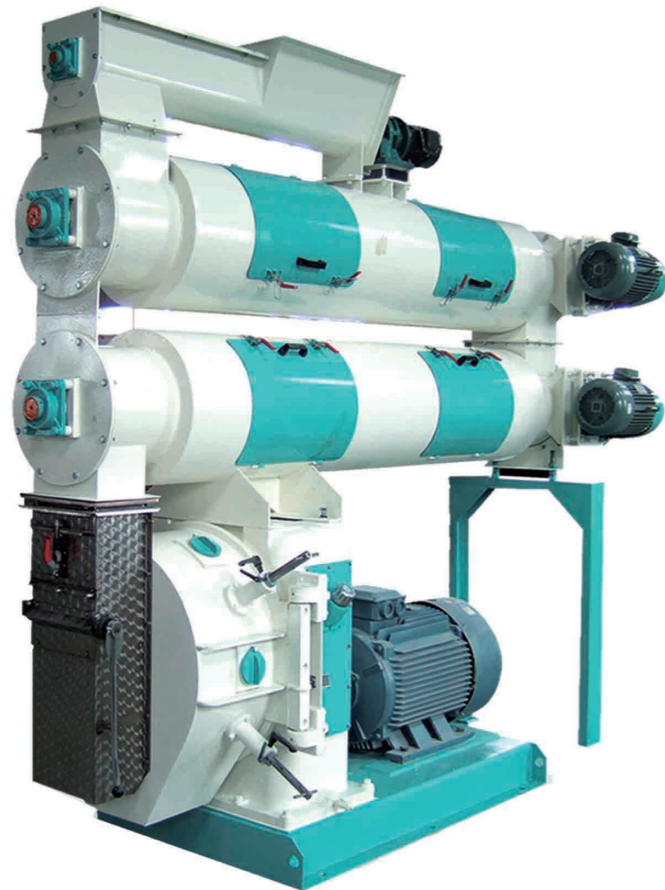
## SLHY Series Horizontal Ribbon Mixer

- Mixing uniformity  $CV \leq 7\%$ , mixing time :3-6 minutes
- It can equipped multiple spray nozzles for liquid adding.
- Large open door discharge, less residue inside.
- It is widely used in compound feed plant, chemical, food, flour mixed materials and other industries.



Model	SLHY0.6	SLHY1.2	SLHY2.5	SLHY5	SLHY7.5	SLHY10
Power(kw)	5.5	11	18.5	30	37	45
Capacity Per Batch(kg)	250	500	1000	2000	3000	4000

## SZLH Series Pellet Mill



STZY Differential Conditioner



Double or triple conditioners are available, none-corrosive stainless steel. Shaft is lengthened and widened

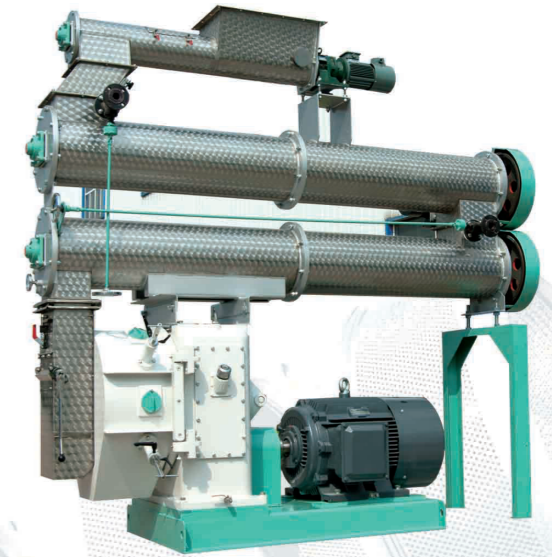


### Features

- Enlarged and strengthened full stainless steel feeder and frequency – convertible speed-adjustable controller with built-in high performance magnet.
- Full stainless steel conditioners with axial jacket steam spraying device and liquid inlet and bolted door for inspection and cleaning.
- External discharging unit.
- High – precision gear driving system for overload protection with strong impact to ensure full load running and long service life.
- Imported SKF or NSK bearing and oil seal.
- High power flexible couple with strong compensation displacement, Full stainless steel cutting unit with dial.
- Fast and convenient positioning, loading and unloading of die. Die lift device can be supplied. High quality stainless steel die processed with world advanced technology.
- Suitable for producing all kinds of high quality livestock and poultry feed and aqua feed.



SZLH400D Series Pellet Mill



SZLH420D-II Series Pellet Mill



SZLH508D-III Series Pellet Mill



SZLH508M Series Pellet Mill

Model	SZLH400D	SZLH420D	SZLH508D	SZLH578D
Main Power(kw)	75/90	110	110/132/160	160/180/200
Capacity(t/h)	3-12	5-15	6-20	8-22
Feeder Power(kw)	1.5	1.5	1.5	1.5
Conditioner Power(kw)	5.5	5.5	7.5	7.5
Die Diameter(mm)	400	420	508	572
Pellet Size(mm)	Φ2-Φ18	Φ2-Φ18	Φ2-Φ18	Φ2-Φ18

## SKLB Series Swinging Counter Flow Cooler



It is mainly used for cooling of pellet feed in the feed pelleting section. It cools the pellet feed coming from pellet mill and with a temperature of 70°C-90°C to a temperature 3°C ~ 5°C slightly higher than ambient temperature, and is capable of lowering to a safety moisture content. The cooled pellets not only improves in hardness but also can prevent from going mouldy, which facilitates the transportation and storage of pellet feed.

### Features

- The counter flow cooling principle is adopted to cool the pellets with high temperature and moisture. Hot air touches hot pellets and cool air touches cool pellets so as to avoid the pellet surface crack caused by sudden cooling produced by direct touching between cool air and hot pellets. At the Same time, The airlock is used for feeding and space of air inlet bigger,therefore it can get better cooling effects.
- Slide reciprocating discharger has smooth and reliable discharging,low residue.
- Low pow consumption, easily operation.
- Pellet temperature after cooling is less than +3-5 °C ambient temperature.

Model	SKLB2.5	SKLB4	SKLB6	SKLB8	SKLB10	SKLB12
Capacity(t/h)	5	10	15	20	25	30
Cooling volume(m <sup>3</sup> )	2.5	4	6	8	10	12
Power(kw)	1.5+0.55	1.5+0.55	1.5+0.55	1.5+0.55+1.1	1.5+1.1+0.75	1.5+1.1+0.75

## SKLN Series Counter Flow Cooler



- Increase the cooling capacity and prolong the material cooling time, improve the cooling effect;
- Airlock is used for feeding and air-in area is large, so the cooling effect is remarkable.
- Taper spreader serves to spread and make the pellet feed evenly accumulate in the cooling bin.
- Top part is made of stainless steel, strong anti-Corrosion,long service life.
- Cooling chamber is octangular design,eliminating residue at dead corners.
- Advanced high and low level swith control is adopted,high automation degree.
- Slide type discharging mechanism,smooth and reliable running,low residue.

Model	SKLB2.5	SKLB4	SKLB5	SKLB6	SKLB8	SKLB10	SKLB12
Capacity(t/h)	5	10	12	15	20	25	30
Cooling volume(m <sup>3</sup> )	2.5	4	5	6	8	10	12
Power(kw)	0.75+0.55	1.5+0.55	1.5+0.55	1.5+0.55	1.5+0.55	1.5+0.75	1.5+0.75

## SWDB Series Stabilizer

- Used for the post-cooking of fish and shrimp feed, increase the water stability of the feeds (2-5 hours).
- The chamber is adopted jacket structure,out side insulated by thermal insulation soon cotton, steam heated,equipped with safety valve,safe and reliable.
- Flap type gentle discharging, chamber and discharging hopper are round corner designed, no bridge.
- Adopt unique closed wind closed airlock , Using a new octagonal structure, no dead Angle.
- Suitable for cooling of extruders or fragile products.

Model	SWDB2	SWDB4	SWDB6	SWDB8
Capacity(t/h)	1-3	3-5	5-8	6-10
Cooling volume	2	4	6	8
Power(kw)	2.05	2.05	3.37	3.37



## SSLG Series Triple-Roller Crumbler

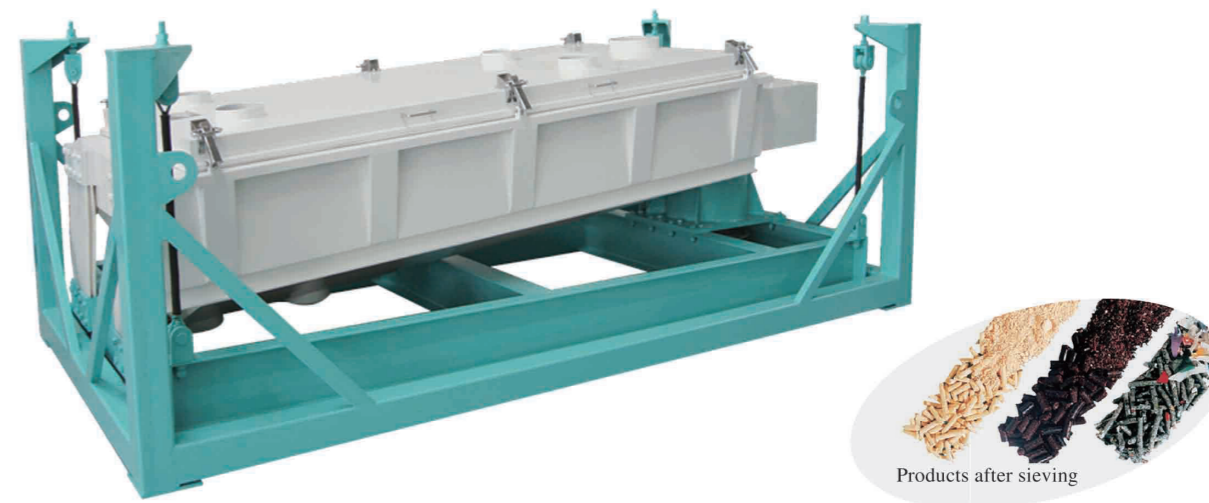


### Features

- It is used for grain crushing, as well as in flour production, oil processing and implementation in the biofuels industry for coarse and fine grinding.
- Module size does not occupy a space, and excellent design for the main drive, makes SSLG crumbler has the very high production efficiency. At the same time it greatly save the running cost
- Highly flexible to meet the various needs of customers
- It satisfies the customers for specific technical requirements. Modular design and different rollers combination operation provides a considerable production flexibility. The equipment can be assembled manually or automatically adjustment for the rollers gap.
- With frequency control, quantitative feeding system can convenient choose production, ensure that the material evenly into the roll; Rollers distance adjustment can be easy to complete, and the product particle size can be detected in the process of production; So it is easy to use and very efficient.

Model	SSLG20×80×3	SSLG20×110×3	SSLG20×140×3	SSLG20×170×3	SSLG30×180×3
Capacity(t/h)	3-5	5-8	8-10	10-15	18-25
Power(kw)	5.5+1.1	7.5+1.1	11+1.1	15+1.1	22+1.1

## SFJH Series Rotary Screener

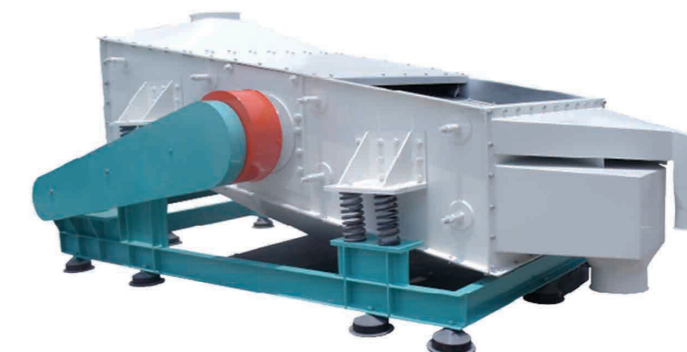


- Combination of circular motion, oral motion, and linear motion, long product moving track, Screening hull driven by belt, tail part with elastic support. Balanced and low noise. results in good screening quality.
- Reinforced support ensures stable running of equipment, suspension structure can also be adopted to meeting customer requirement.
- Using Combo or combined screening frame, ensure the lower weight of the screening cover, more stronger and more seal effect.
- Convenient Screening structure, easily changeable.
- Widely used for grain store, feed, flour, chemical industries, sugar industries, mining and paper making. Ensure the good effect for meal and pellet processing.

Model	SFJH80	SFJH100	SFJH130	SFJH140	SFJH150	SFJH165	SFJH210
Power(kw)	1.5	2.2	3	5.5	5.5	5.5	7.5
Granule Feed Capacity(t/h)	5-7	7-9	11-15	13-16	15-18	18-22	22-25
Powder Feed Capacity(t/h)	3-4	5-7	7-9	8-10	10-12	12-15	13-15

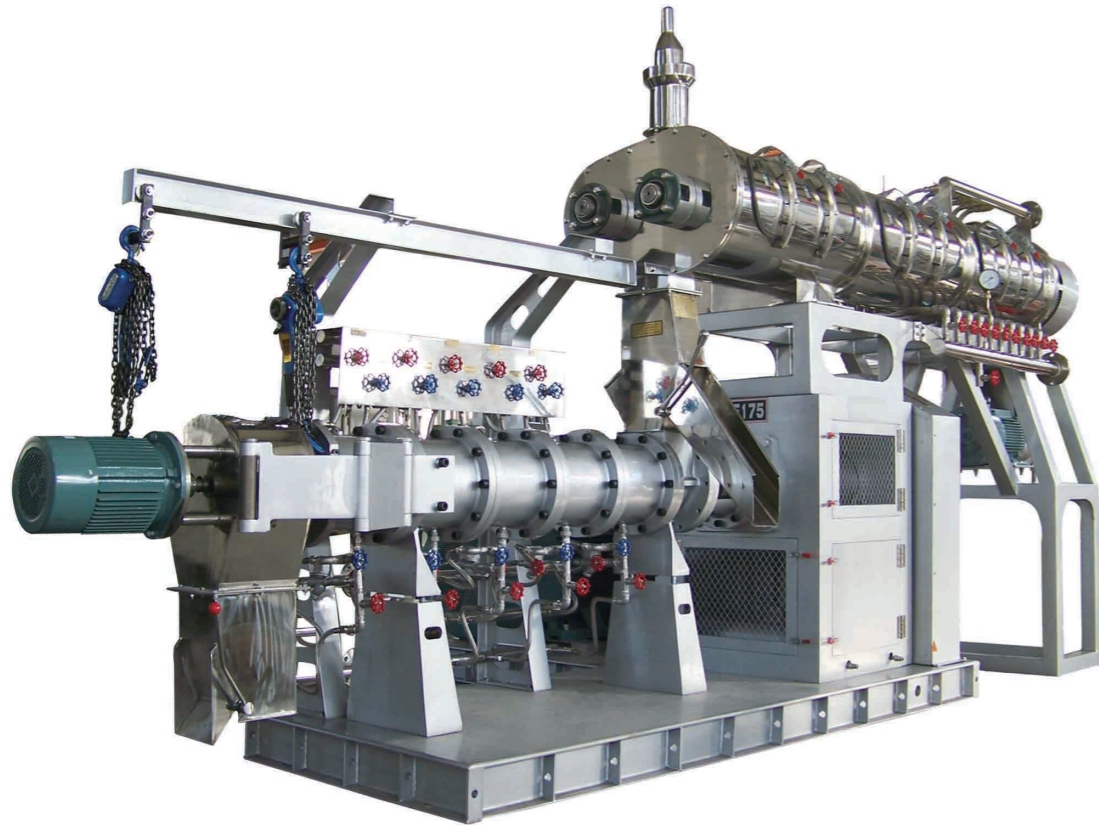
## SFJZ Vibrating Screener

SFJZ Series Vibrating Screener is used to screen and size the mash feed or pellet feed in feed mill, and also pre-clean the raw materials in feed mill in the industries of grain, food, chemicals, sugar making, mining, papermaking, etc.

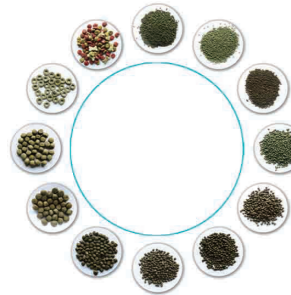


Screener for floating feed

## SPHS Twin-Screw Extruder



SPHS-S Series Twin-screw  
Steam Extruder

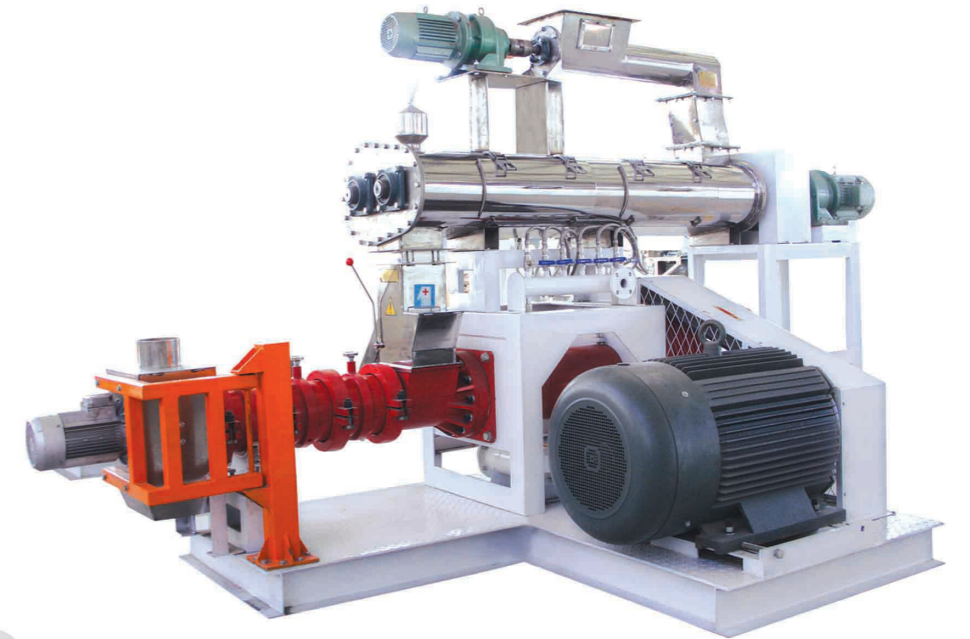


\*提升饲料在水中的稳定性  
\*提高饲料的热能含量

### Features

- With full stainless steel double-shafter differential-diameter conditioner.
- Screw sleeve is in a structure of sandwich where cool water or steam can be inducted for cooling or heat keeping respectively, thus ensuring the best cooking effect and obtaining the best extruding quality.
- The movable knife housing is used, which result is good elasticity of knife. The rotational speed can be adjusting steplessly. Die plate can be changed due to the requirement to produce the extruded feed with different pellet diameter and shape.
- Stainless steel external discharge mechanism
- It can produce pet food and sinking and floating aqua feed.

## SPHS Single Screw Extruder



### Features

- SPHS single-screw extruder is tailored for the customer, can provide a full range of solutions for different needs of customers. It has high output, flexible configuration, in the production of various kinds of fish feed, shrimp feed, pet food. It is also used in raw materials processing such as soy puffing, puffed corn and rice bran and so on.

- Simple operation and convenient maintenance

SPHS series extruder machine is for convenient operation design, the layout of the machine is easy to control, all kinds of control element are easily touched by worker. Also it is easy to clean, avoid the cross contamination after change the various materials.

- Drive configuration

Driving system consists of triangle belt transmission, low noise operation, ensure the transmission efficiency, easy maintenance.

- Flexible Mould

We Can provide the mould according to the customer's specific needs in the design, manufacture and supply.

- Barrel

New SPHS single screw extruder equipped with a unique split barrel, to adjust the length of screw; that offer convenience for cleaning the change screw; Screw, bushing, and shear lock adopts special wear-resisting material, long service life; barrel temperature has digital display; Equipped with cooling water screw and steam heating screw.

- Cutting Knife System.

The mould and cutting knife can change the distance between them, when the machine no need to stopping.

- Conditioner.

Double layer stainless steel conditioner, equipped with stainless steel steam drum and various add components; Paddle adjustment convenient and flexible, cooking time can choose; Cleaning and maintenance is convenient.



## DCS Series Bagging Scale

- HME Bagging scale adopt control instrument, loadcell and pneumatic element with imported technical, high measuring accuracy,stable performance.
- Automatic error correction, alarm for over and under tolerance,fault auto diagnose.
- Stainless steel contacted parts,long using life.
- Reserve RS232/485 interface,with peripheral management system for data communication



### DCS-50CS High Speed Bagging Scale

- Suitable for Granular materials of the industry of the feed, grains, oil, etc.
- Bring Double discharge, i.e. both weigh-pans. High-speed bagging, greatly improve the yield.
- Equips a Voltage regulator to run steady.

Model	DCS-50C
Weighing extent (kg)	20~50
Capacity(bag/h)	360~420
Scale interval (g)	10
Accuracy grade	X(0.2)
Air expenditure	0.4~0.6MPa 1.5m3/h
Power supply	220V 50Hz 35W
Height (mm)	2800 ( Include bin )

### DCS-50CS High Speed Bagging Scale

- Suitable for Granular material and semi granular material of the industry of the concentrated feed, grains, oil, etc.
- It is particularly suitable for powder and granule feed stuff quantitative packaging.

Model	DCS-50CS	
Weighing extent(kg)	20~50	
Scale interval (g)	10	
Packing material type	Granule Feed	Powder Feed
Capacity (bag/h)	600~720	480~540
Accuracy grade	±10g	±20g
Power supply	AC220V 50Hz 350W	
Air expenditure	0.4~0.6MPa 1.5m3/h	
Height (mm)	3500	



### DCS-50CW Electronic Quantitative Scale

- It is suitable for feed mill,extrudates,grain etc packing.
- Using belt feeding, feeding speed and belt speed are adjustable.

Model	DCS-50CW
Weighing extent (kg)	20~50
Capacity(bag/h)	240~300
Scale interval (g)	10
Accuracy grade	0.2%F•S
Air expenditure	0.4~0.6MPa 1m3/h
Power supply	4N-AC 380V 50Hz 420W
Height (mm)	2400



### DCS-25CW Electronic Quantitative Scale

- It is for concentrates, premixes, food additives industry powder quantitative packing.
- It is using screwer for feeding,that is particularly suitable for feeding powdered materials.
- Material touch is made of stainless steel, long life service.

Model	DCS-25CW
Weighing extent (kg)	20~25
Capacity (bag/h)	180~240
Scale interval (g)	5
Accuracy grade	0.2%F•S
Air expenditure	0.4~0.6MPa 2m3/h
Power supply AC	AC 380V 50Hz 2.5KW
Height (mm)	2200



## Computerized Scale



- PLC computerized proportioning system is integrated with proportioning and management function ; high accurate weighing . stable and reliable ; widely applied in feed , flour and other industries.
- The system consists of host , control console , analog panel and scale hopper.
- It can be supplied with one, two, three and four scales according to requirements.

Model	100/250/500/1000/2000/3000/4000
Static	0.1%FS
Dynamic	0.3%FS
Weighing size ( kg/batch )	100/250/500/1000/2000/3000/4000

## SYTV Liquid Adding Machine

- It is Suitable for addition of oil, molasses etc. To improve the quality of feed Mill.
- The capacity of daily tank is designed in accordance with different throughput, meeting different adding quantities
- A compact mixing system can be selective for special liquids.
- With heating system, high and low liquid level indicator, all of them can be controlled and monitored automatically.
- Integral type design ensures no pollution to surrounding environment.
- Compact structure, with high accuracy weighing unit.

Model	SYTV18	SYTV32	SYTV63	SYTV120
Capacity	18	32	63	120
Power	1.5+1.5+2.2	2.2+2.2	2.2+3	2.2+7.5

## SYTC Weighing Adding Machine

- Design together with SYTV series, convenient for selection.

Model	SYTC50	SYTV100	SYTV300
Capacity	50	100	300
Power	2.2	3	7.5



## SYPG950 Drum Coater

- It is suitable for post coating of extrudates and shrimp feed. It employs continuous drum coating, ensure uniform coating of the products.
- It is equipped with belt feeder, ensure uniform feeding and product quality. The drum body is with gear driving, more reliable and low failure rate; lengthened design, good affect.

Model	SYPG850
Capacity	3-6
Power	2.2



## SYPM Liquid And Enzyme Spraying Equipment

- It is used for the continuous spraying of the microelement like liquid enzyme. Flow scale firstly measures the amount and the calculation pump adjusts the amount automatically according to the set adding ratio. The liquid enzyme is then coated on the surface of the pellet. This coater has the function of automatic stop, error alarm, etc.
- Flow scale accuracy: above 1%  
 Liquid scale accuracy: above 1%  
 Liquid adding amount: 0.04-0.4L/t  
 Spraying uniform degree: 90%



## Auxiliary Equipment



### GKLW Series Drum Cooler

- It is mainly used for cooling the high temperature extrudates, reasonable structure, good cooling effect, maintenance is convenient.

Model	GKLW90	GKLW100	GKLW120
Capacity(t/h)	0.8-1.2	2.0-3.0	3.0-5.0
Power(KW)	1.1	2.2	5.5



### SGWG Series Drum Dryer

- Inlet steam pipe is made of advanced rotary joint sealing, no leakage.
- Outside Drum body is made of thermal insulation materials, reduce the formation of condensative water.
- Key components is using high wear-resisting material and stainless steel, to improve the reliability and durability.
- It is equipped with air adjusting doo to ensure the finished product moisture content of  $\leq 11\%$ .
- It is Adopts frequency motor control, that can effectively control the feed mill stable time, further improve the cooking effect of products.
- It is applicable to drying shrimp feed, eel feed ,turtle and other high grade poultry feed mill.

Model	SGWG100	SGWG120
Capacity(t/h)	1-2(shimp feed)	3-4(shimp feed)
Drum Diameter(mm)	1000	1200
Power(KW)	5.5	7.5

- It is for vertical conveying and can be effectively applied to the processing industry or bulk storage facilities with high production capacity. It can hoist powder and granular materials up to the highest 60 meters.
- Solid structure, high wearing spare parts, long service life.
- Convenient maintenance for top access door and middle part , easy to cleaning.
- TDTG bucket elevator has circular base for selection, make it used for sanitary field.
- The standard structure have one layer or multilayer powder spraying, in addition, also provide galvanized and stainless steel material: it's for a variety of raw materials as well as indoor and outdoor installation to ensure a high flexibility.

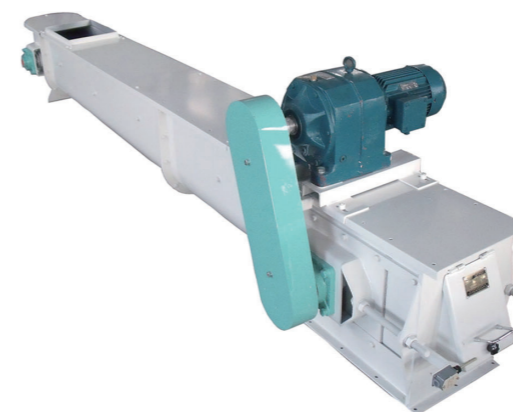
### TDTG Series Bucket Elevator



### TGSS Series Drag Conveyor

- It is mainly applied to food warehouses, docks, food processing plants, pharmaceutical, brewing and other industries to transport all kinds of raw materials, semi-finished food, feed and other granular.

Model	TGSS16	TGSS20	TGSS25	TGSS30	TGSS40
Capacity(t/h)	12-30	30-50	50-100	100-130	180-240



### TGSU Series U Drag Conveyor

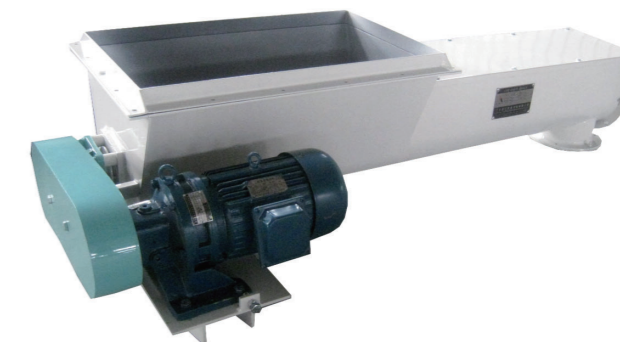
- It is a self-cleaning type horizontal conveying equipment, mainly used for conveying powder material and granular materials.
- The bottom is of the u-shaped slot, scraper is made of refined wear-resisting industrial plastic.
- Simple structure, low power consumption.

Model	TGSU16	TGSU20	TGSU25	TGSU32	TGSU36
Capacity(t/h)	15-30	25-50	30-70	40-100	45-120

### TWLL25×3 Screw Conveyor



### TWLL Screw Conveyor



Model	TDTG40/18	TDTG40/23	TDTG40/28	TDTG50/23	TDTG50/28
Capacity(m³/h) Granular	45	60	80	80	100
Powdery	30	40	55	50	60

## Auxiliary Equipment

### TCQY Double Drum Cleaner



- Cleaning effect is good, removing impurity high efficiency, big miscellaneous removing efficiency around 99%.
- Power is small, high yield, stable operation and reliable. Changing sieve convenient maintenance in a regiment shape occupy a space is small.
- Widely used in the feed, grease and flour, milling, grancy etchemical industry and food and raw materials the first cleaning finishing processes.

Model	TCQY63	TCQY80	TCQY100	TCQY130
Capacity(t/h)	20-40	40-80	80-100	100-120
Power ( kw )	0.55	0.55	1.5	3

- It is mainly for powder mesh pre cleaning , it can effectively clean out straw powder waste, hemp rope, paper, stone, and other big impurity cleaning rate of  $\geq 99\%$ .

Model	SQLZ60*50*80	SQLZ80*90*100
Capacity(t/h)	20-40	20-40
Power ( kw )	0.55	0.55

### SQLZ Series Powder drum sieve



### SCY Series Cylinder Pellet Cleaner



- It is a pre-cleaning equipment for feed mill, flour mills, rice mills and other grain preliminary cleaning processes.
- It can equipped with different sizes of screeners.

Model	SCY63	SCY80	SCY100	SCY130
Capacity(t/h)	20-40	40-80	80-100	100-120
Power ( kw )	0.55	0.55	1.5	3

### TBLMa Series Pulse Filter



- It is a efficient dust removing equipment, widely applied in grain, food, feed, light industry, mining, building material, timber and other industries for the dedusting and dust recycling.
- The body is square structure, filter bag is round.
- Cage divides into hard cage and soft cage, for different use.
- Big Air Volume processing, less area taken, low noise.

### TBLMY Series Pulse Filter

- It is widely applied in the grain, food, feed, light industry, mining, building material, timber and other industries for the dedusting and dust recycling.
- More than 99% dust removing efficiency, Big Air Volume processing, less area taken, low noise.
- Using tangential centrifugal to let air , which is beneficial to reducing the wind resistance, reducing filter bag load.
- Improved equipment height, round bag length is extended, and increase the bag filter area, improve the effect of dust removal.
- According to site needs, use filter and discharger combination , reduce the investment.



## Auxiliary Equipment



### TFPX Series Rotary Distributor

- It is used in food, feed mills, oil, starch factory for powdery and granular materials.
- Self air suction to ensure material suck back to the original bin(optional).
- Driving by Cycloidal reducer or straight gear box reducer drive, compact structure, smooth discharge pipe rotation.
- The positioning of discharging pipes is accurate and reliable,avoiding discharge the products into other bins.
- After discharging pipe positioning, and distribution plate of sealing is reliable.

- It is widely used for iron removing of raw materials in industries of feed, flour, rice milling, grain warehouse, food and chemicals.
- Tube is made of stainless steel and iron removing rate is higher than 99%. The magnetic core is made of newest rare-earth permanent magnetic material with magnetic intensity  $\geq 3000$  GS.
- The stiffened and thickened gate-opening hinge completely avoids the occurrence of dropping of magnetic gate.
- No motor power need, installation is flexible and convenient.
- Easy operation and cleaning.

Models : TCXT20、TCXT25、TCXT30、TCXT40



### TCXT Series Spout Magnet

### TBDQ Series Pneumatic Three discharger



- It is mainly used for food, food, feed, oil chemical processing industry of bulk material flow in the pipeline for redirection, is an essential part of production technology for automatic control equipment.
- There are two types, one is symmetric, the other is asymmetric.

### TSMQ Series Double Wing Gate



It is suitable for food, food, feed, oil, chemical processing industry, etc.

- It is Mainly for cutting function on the pipe.
- With small volume, light weight, simple structure, rapid opening and closing, regulating and sealed performance is good.



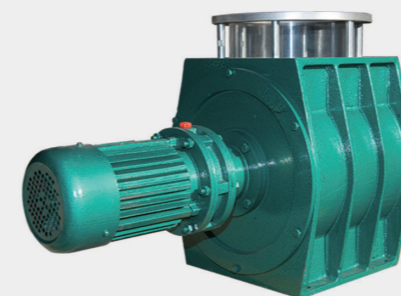
Manual Slide Gate



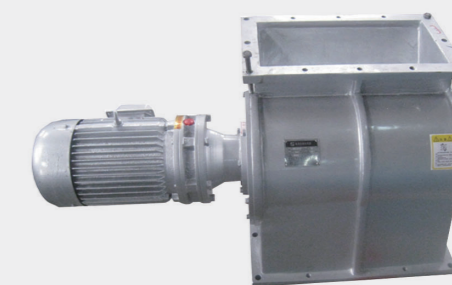
Pneumatic Slide Gate



Electrical Slide



Airlock



SS Airlock

## Premix Equipment

SGFZ Series Bag Intake



- It is mainly used in feed mills of additive screening and grading. In addition, it can be widely used in food, chemical industry, sugar, mining, paper and other raw materials and finished products screening and grading.
- Vibration motor is small size and light weight, easy installation, low noise, can be arbitrary adjustment of vibration force size.
- It includes screen frame and screen box, cylindrical screen, vibration motor, soft connection parts and so on.
- with steel plate welded structure and internal accommodate screen.
- Compact design, easy installation and maintenance.



Tntake Bag



Intake Car

## Spare Parts



Ring Die



Big Gear



Roller



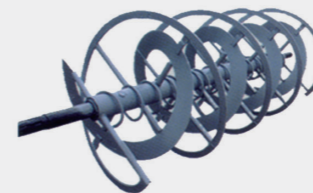
Clamp



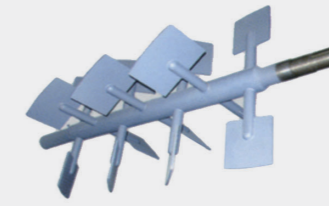
Pionion



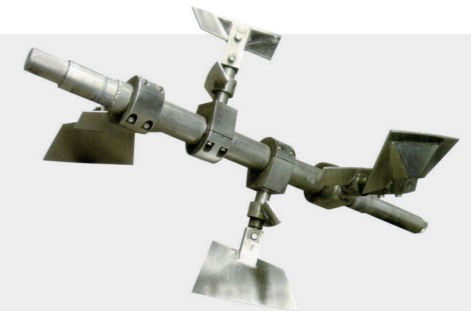
Union Empty Core



Robin Mixer Rotor



Double Shaft Mixer Rotor



Single Shaft Mixer Rotor



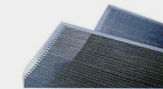
Hammer Mill Rotor



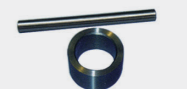
Hammer



Hammer knife



Screener



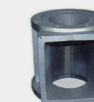
Pin and Gap



Extruder Spare Parts



Double Bolts



Chamber



Knife Rest



Pressure Ring



Wearing Ring



Outlet Mould

Projects Onsite

*Start With Our Heart*

*Focus On Details*

*Keep Our Promise*



Powder sieve scenes



Pellet sieve scenes



Bucket elevator platform



Grinding scenes



Pulverizer scenes



Mixing scenes



Robin mixer scenes



Dosing scales scenes



Pelleting scenes



Shrimp feed pelleting scenes



Cooling scenes



Post cooking scenes



Sifting scenes



Crumbling scenes



Soybean expanding scenes



Packing scenes



Fan scenes



Air Pipe Scenes



40Tons/hr Feed Mill line Layout



60Tons/hr Feed Mill line Layout

## Control System

We can supply various types of single and complete sets of feed mill production line and automatic control system include:

- \*Pellet mill automatic control system.
- \*Extruder and expander automatic control system.
- \*Hammer mill automatic control system.

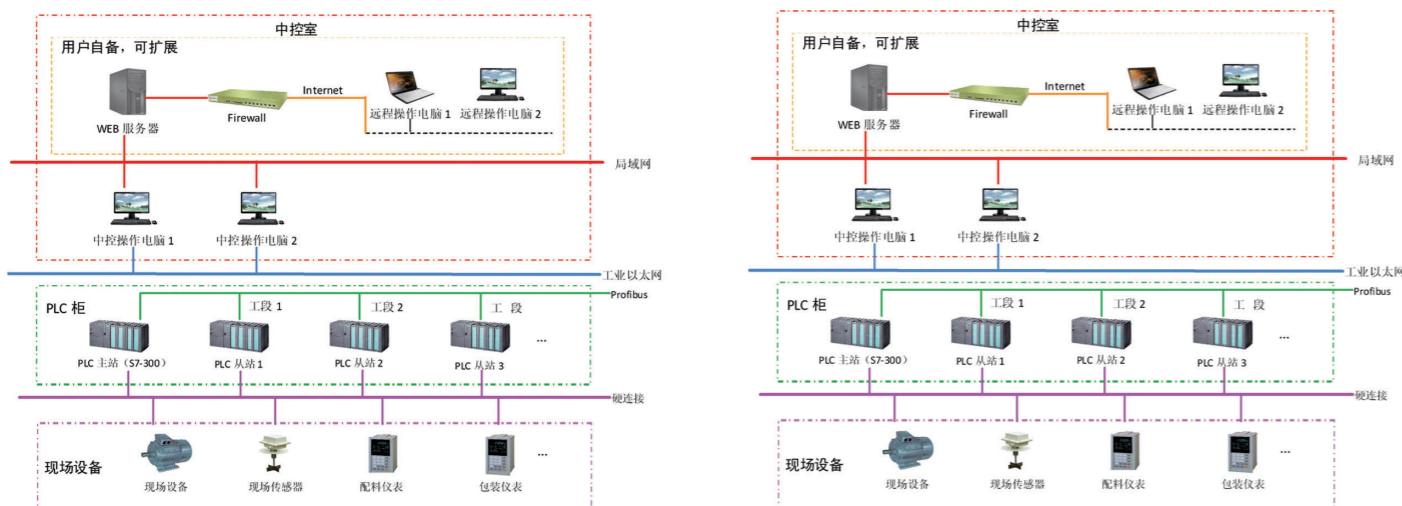


Bus Full Control System

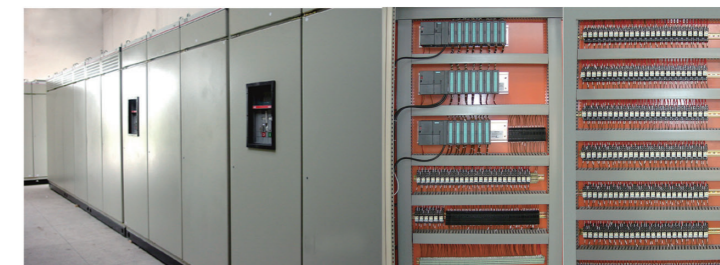


Mimic Centralized Control

Electrical control system uses distributed control system (DCS) include industrial control computer, batching industrial control computer, PLC (main achievement section interlock control and sequence control devices) and smart instrumentation, strong electric control center (MCC cabinet), onsite control equipment, etc.



Centralized Control Onsite



Cabinet with GB ARM low-pressure sealed cabinet or similar standard products like GGD cabinet shell. Inside the control loop coherent

